

The Drovers Solar Farm

Consultation Report Appendix C: Copy of the SoCC and Compliance with the SoCC

Prepared by: Copper Consultancy

Date: November 2025

PINS reference: EN0110013

Document reference: APP/5.2 (Original)

APFP Regulation 5(2)(q)

Planning Act 2008

Infrastructure Planning (Applications: Prescribed Forms and Procedure) Regulations 2009





Contents

1	Copy of the published SoCC.....	2
2	Compliance with the SoCC.....	36

1 Copy of the published SoCC

The Drovers Solar Farm

Statement of Community Consultation (SoCC)
April 2025



Contents

1. Introduction
2. About Island Green Power
3. The DCO application process
4. The Scheme
5. Environmental Impact Assessment
6. Early engagement and engagement approach
7. Non-statutory consultation
8. Who we are consulting
9. How we are consulting
10. Promoting the consultation
11. Inclusive consultation
12. Enquiry channels
13. Responding to the statutory consultation
14. How we will use consultation feedback
15. Further consultation
16. Appendices



1. Introduction

The Drovers Solar Farm Ltd (“we”) is preparing a Development Consent Order (DCO) application under the Planning Act 2008 (“the Act”) for a new solar and battery energy storage project with grid connection, known as The Drovers Solar Farm (“the Scheme”¹), located on land north of Swaffham and south of Castle Acre, West Norfolk.

This document is a Statement of Community Consultation (SoCC), which sets out how we intend to engage with local communities as we prepare our DCO application for the Scheme.

Prior to publishing the SoCC, we shared a draft for host local authorities to comment on. In accordance with Section 47(2) of the Act, consultation on the SoCC provides local authorities with an opportunity to contribute to a consultation programme tailored to the needs of communities likely to be affected by an application under the Act.

The Scheme is a Nationally Significant Infrastructure Project (NSIP) and requires consent from the Secretary of State (SofS) for the Department for Energy Security and Net Zero (DESNZ) via a DCO. This SoCC has been prepared under section 47(1) of the Act and Regulation 12 of the Infrastructure Planning (Environmental Impact Assessment) Regulations 2017.

The purpose of the SoCC is to set out how we intend to consult people living in the vicinity of the land that is needed for the Scheme, before the DCO application is submitted. The SoCC includes:

- an overview of the DCO application process we must follow;
- information about Island Green Power, who are proposing the Scheme;
- what we will be consulting on;
- who we will be consulting;
- how we will be consulting;
- how people can respond to the consultation; and
- how we will use feedback to the consultation.

This SoCC has been published ahead of statutory consultation starting.

The glossary at the end of this document defines the key terms used in this document.

¹ In technical and planning documents The Drovers Solar Farm is referred to as “the Scheme” in line with standard terminology used in the Development Consent Order (DCO) process. In public-facing communications, the term “the Project” is used for accessibility and clarity.



2. About Island Green Power

Established in 2013, Island Green Power (IGP) is a leading developer of utility-scale solar projects and battery energy systems. IGP delivers renewable energy solutions that create lasting value for the communities it serves, protecting the environment while fostering economic growth and energy independence.

IGP operates in the UK, Spain, Italy, Australia and New Zealand. Since its launch, it has successfully delivered more than 34 solar projects worldwide that have generated more than 2 GW of energy capacity. These include 20 solar projects in the UK and the Republic of Ireland.

These range in size from below 5 MW to NSIPs, such as Cottam Solar Project, currently the UK's largest consented solar project. Cottam Solar Project will generate 600 MW of clean, renewable and secure electricity and includes 600 MW of battery storage that will store then release energy as needed.

3. The DCO application process

As the proposed generation capacity for the Scheme is anticipated to be approximately 500 MWac (Megawatt Alternating Current), it exceeds the 50 MW threshold to be classified as an NSIP. The consenting regime for NSIPs comes under the Act and requires us to apply for a DCO.

We intend to apply for a DCO under Section 37 of the Act. DCO applications must be submitted to the SofS through the Planning Inspectorate (PINS).

The Application will be examined by an independent Examining Authority appointed by PINS, who make a recommendation on the application to the SofS. The SofS makes the final decision on a DCO application.

Further information on the DCO planning process is shown in Figure 1 and can also be found on the PINS website: <https://www.gov.uk/guidance/planning-act-2008-pre-application-stage-for-nationally-significant-infrastructure-projects>.

Before applying for the DCO, the Act requires us to carry out consultation with people living in the vicinity of the land (under Section 47 of the Act), with prescribed stakeholders (under Section 42 of the Act) and those with an interest in the land.

This SoCC has been prepared with reference to guidance on pre-application consultation published by the Government and PINS, and sets out the approach to consultation with the community in the vicinity of the Scheme.



Figure 1: Summary of the DCO application process for the Scheme





4. The Scheme

The Scheme would comprise approximately 825 hectares of land, located north of Swaffham and south of Castle Acre, West Norfolk.

We are still at the early stages of the design process, which means that survey work is still being undertaken to identify the exact areas that will be used for the Scheme.

The proposed Scheme would have an operational lifetime of up to 60 years and consist of a solar photovoltaic (PV) electricity generating station with associated development including:

- solar PV panels;
- mounting structures (including both single-axis trackers and fixed south-facing orientation);
- inverters, transformers and switchgear;
- Customer Substation and National Grid Substation, and associated electrical infrastructure, such as the transformers, switchgear and metering equipment required to facilitate the export of electricity from the Scheme to the National Grid;
- Battery Energy Storage System (BESS);
- ancillary infrastructure;
- infrastructure tracks and highway works;
- Cable Route Corridor – underground cabling connecting the Conversion Units to the BESS and the Customer Substation;
- Grid Connection Corridor – cabling connecting the Customer Substation to the Point of Connection, which may be underground or overhead lines;
- Grid Connection Infrastructure – Underground and/or overhead lines, including new pylons between the National Grid Substation and the Point of Connection;
- Green Infrastructure;
- proposed Mitigation and Enhancement Area;
- Construction Hub; and
- Temporary Construction compounds.

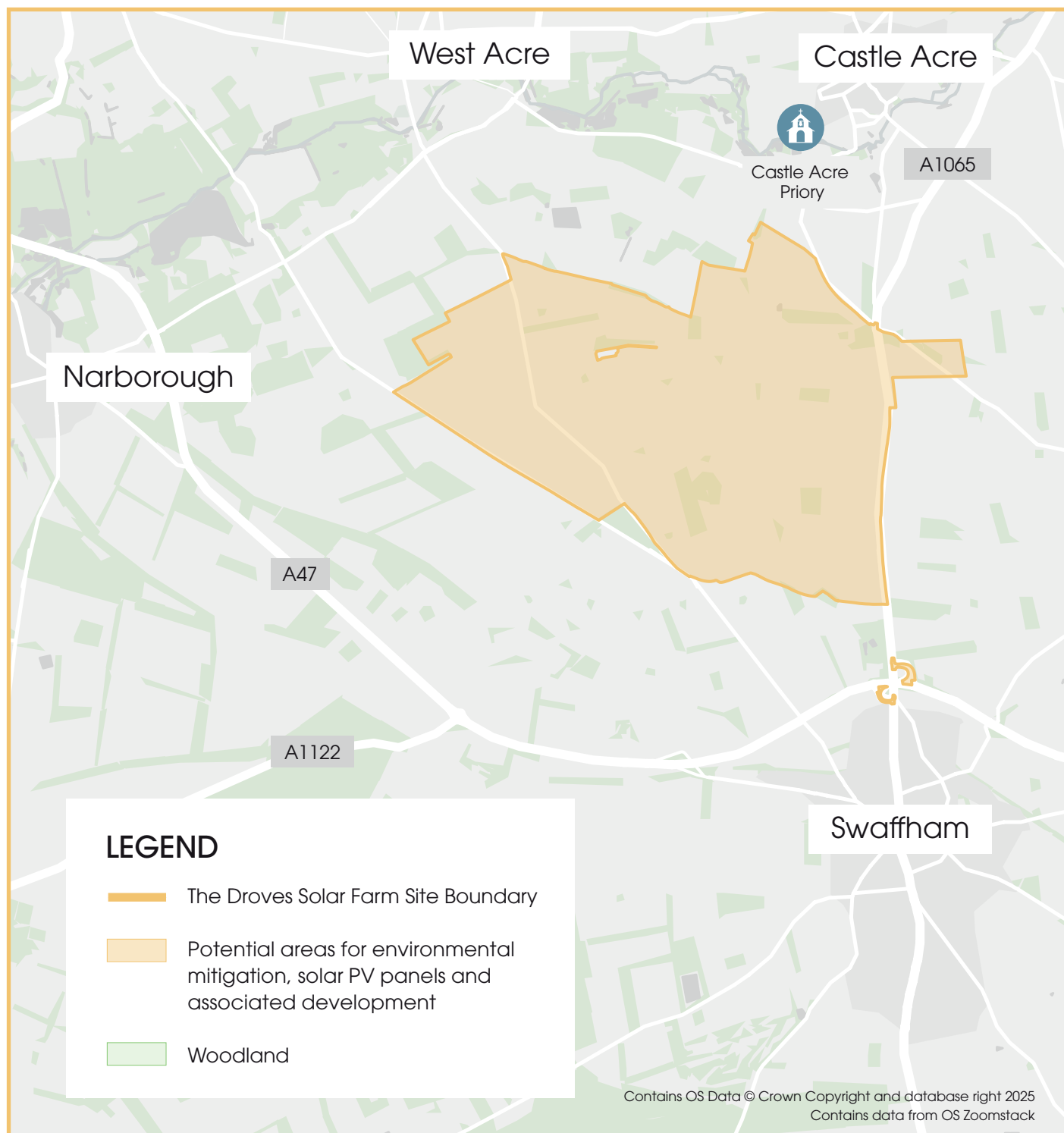
The Scheme could supply approximately **500 MWac of renewable energy** to the National Grid, which would power the equivalent of approximately **115,000 households annually**.





Figure 2: Map of Site

More details about the changes we have made to the proposed Site layout since our non-statutory consultation, along with an Indicative Masterplan, will be available to view during our statutory consultation.





5. Environmental Impact Assessment

We are required to undertake an Environmental Impact Assessment (EIA) under the Infrastructure Planning (Environmental Impact Assessment) Regulations 2017.

This means the DCO application must assess the likely significant environmental effects of the Scheme and, where appropriate, implement mitigation measures to prevent or reduce any significant adverse effects.

We submitted a Scoping Request to the SofS on 7 November 2024, which provided an overview of the likely significant environmental effects to be reported in the Preliminary Environmental Information Report (PEIR) and Environmental Statement (ES), the latter of which will be submitted as part of the DCO application. In response to the Scoping Request, PINS issued a Scoping Opinion on 18 December 2024. The Scoping Opinion is available to view on the PINS website:

<https://national-infrastructure-consenting.planninginspectorate.gov.uk/projects/EN0110013>

We will also be consulting on the PEIR, which provides information about the preliminary results of our assessments, as part of the statutory consultation.

A Non-Technical Summary (NTS) will be available that summarises the content of the PEIR.

We will publicise and consult on the PEIR and NTS as part of the statutory consultation, and they will be available on the Scheme website (www.drovesolarfarm.co.uk), at the information point and at in-person events during statutory consultation. We will be seeking views from members of the public and other stakeholders on this and other consultation documents.

The ES will set out the assessment and conclusions of the EIA. It will build on the content of the PEIR and take into account the responses from the statutory consultation, stakeholder engagement and the results of surveys undertaken. It will also describe any changes to the Scheme and any mitigation measures that need to be implemented.

Preparation for the ES will begin in early summer 2025, following statutory consultation.

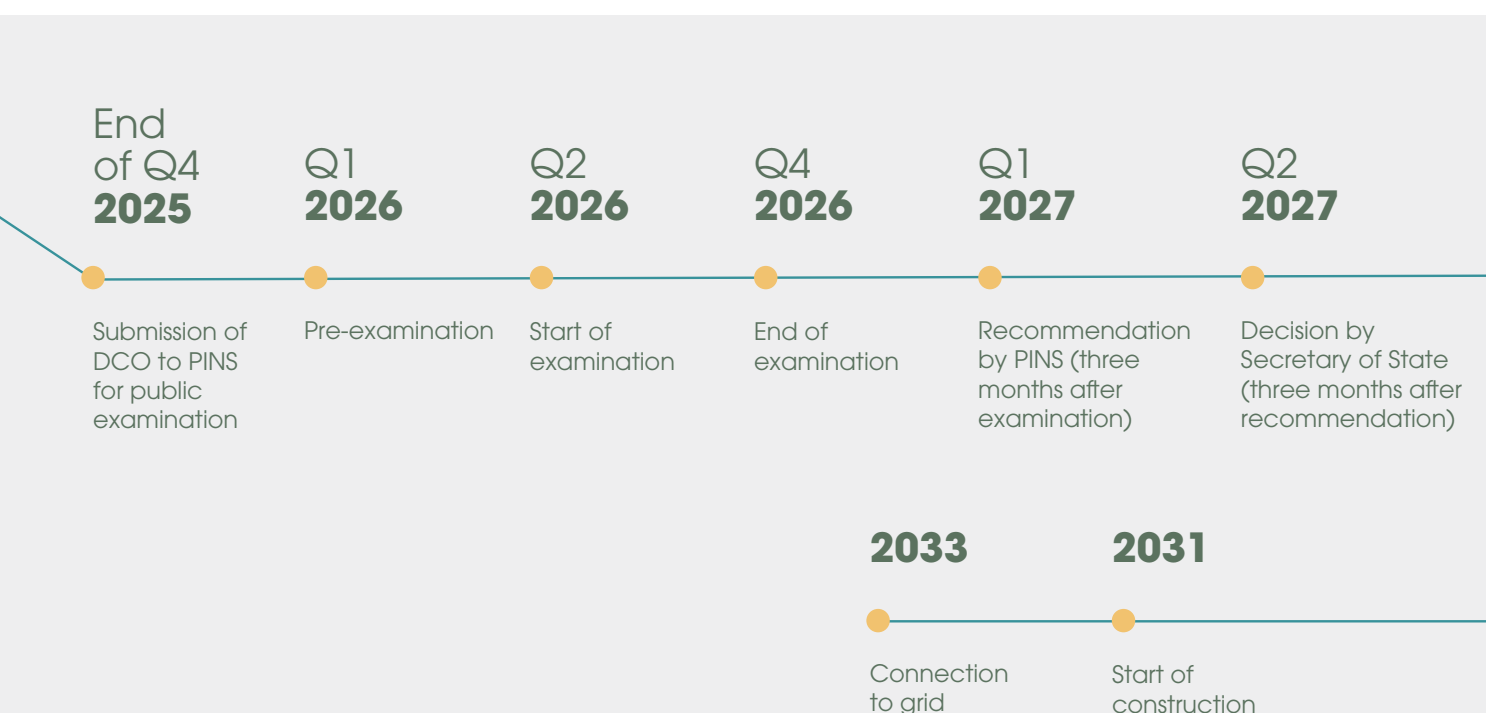


Figure 3: Timeline of activity for The Drovers Solar Farm DCO application



6. Early engagement and engagement approach

6.1 Early engagement

We are committed to engaging and consulting with communities and other stakeholders at all stages of the development process.

In September 2024, we held introductory briefing meetings with local political representatives and presented initial ideas for the Scheme design.

Invites were issued to representatives from:

- Breckland Council;
- Norfolk County Council;
- Borough Council of King's Lynn and West Norfolk;
- Swaffham Town Council;
- Host and neighbouring parish councils; and
- Host and neighbouring constituency area MPs.

We issued letters to near neighbours, which are residential and commercial properties within 50 m of the Site. These were considered as 'neighbours' to the Site and likely to be interested in the Scheme.

To raise awareness of the Scheme, in October 2024, we also circulated an initial newsletter to local communities (defined by a Primary Consultation Zone (PCZ) of approximately 5,760 residential and business addresses – as shown in Appendix 1).

This newsletter contained information on the Scheme and details on how to contact the project team, such as the website, email address and freephone information line for those wishing to find out more.

The newsletter is available on the website:

<https://drovesolarfarm.co.uk/#documents>

6.2 Approach to consultation

The approach to consultation consists of two phases:

- ongoing engagement, and early engagement workshops (non-statutory consultation) held during September–October 2024; and
- statutory consultation period lasting seven weeks in summer 2025.

This SoCC relates to the statutory consultation. However, a summary of the ongoing engagement, also referred to as non-statutory consultation, is provided below.





7. Non-statutory consultation

The primary aim of our non-statutory consultation was to introduce the early-stage proposals for the Scheme, including the early environmental assessments and site selection work carried out to date.

We held a series of workshops with invited stakeholders to help us understand key issues and potential constraints in the local area.

These workshops were a collaborative masterplanning exercise between stakeholders and the developer, to capture local knowledge and incorporate this into the ongoing environmental assessments and design development.

We continued to engage with the community via the channels listed below:

Email: info@drovessolarfarm.co.uk

Community relations freephone: 0800 0129 154

7.1 Early-engagement workshops

We held two in-person workshops with local councils and community groups:

Tuesday 17 September 2024, from 14:00 until 17:00
at The Dragonfly Hotel, King's Lynn

Tuesday 1 October 2024, from 17:00 until 20:00
at The George Hotel, Swaffham

Each session included an introductory presentation, followed by a Q&A session and an interactive masterplanning session, where attendees could provide local insight and work with the project team to provide feedback. The materials presented during these sessions were made available to view on the Scheme website:

<https://drovessolarfarm.co.uk/#documents>

In addition to the in-person workshops, we held a series of virtual technical workshops:

- Water and Flood workshop: Tuesday 24 September 2024, from 10:00 until 12:00 using Microsoft Teams
- Planning, Community Benefit and Socio-economic workshop: Tuesday 24 September 2024, from 14:00 until 16:00 using Microsoft Teams
- Traffic and Transportation workshop: Thursday 26 September 2024, from 10:00 until 11:30 using Microsoft Teams
- Ecology and Biodiversity workshop: Thursday 23 January 2025, from 10:00 until 11:00 using Microsoft Teams

These workshops used slides relevant to the technical disciplines from the presentation given at the in-person events, followed by a Q&A session to address any questions and gather further feedback.

The later Ecology and Biodiversity workshop was arranged to discuss written feedback provided during the non-statutory consultation period on materials presented as part of the early-engagement workshops.

**Table 1: Feedback received during early-engagement workshops**

A table summarising the key feedback from the early engagement workshops can be found below.

Key themes from the feedback		How we are working to address and incorporate the feedback	
Design			
Concerns were raised about the Scheme’s size and the use of land for solar PV panels, BESS and associated infrastructure. Participants emphasised the need to retain ecological features and incorporate mitigation measures.		We are conducting surveys to identify areas for solar infrastructure, environmental mitigation and biodiversity enhancements.	
Ecology and biodiversity			
Participants recognised the need for Biodiversity Net Gain and expressed a desire to enhance local habitats on-site and in surrounding areas. Concerns included the impact of fencing and panels, and the potential displacement of wildlife. Suggestions included planting hedgerows, trees and brambles to create wildlife corridors.		We are engaging with stakeholders, including Norfolk Wildlife Trust, to refine mitigation strategies. Surveys on species and habitats, such as birds and amphibians, are ongoing.	
Cultural heritage			
Participants stressed the importance of preserving local landmarks and protecting the rural character of the area.		We are conducting surveys from key heritage sites and settlements, including Castle Acre Priory, to assess impacts and guide mitigation strategies.	
Transport and access			
Concerns regarding construction traffic on rural roads and seasonal traffic flows were raised. Suggestions included designated routes, pedestrian safety measures and buffers around byways.		We are conducting surveys and will develop Construction Management Plans to address these concerns.	
Cumulative impact			
Concerns about the cumulative impacts of multiple developments in the area were raised.		We are engaging with other developers and conducting a cumulative impact assessment as part of the EIA process.	
Community benefits and engagement			
Partnership with the Norfolk Community Foundation, to ensure benefits are felt locally, was suggested. Participants also suggested initiatives such as community gardens, allotments, electric-vehicle chargers and STEM sessions.		We are continuing to engage with local councils and organisations to explore community benefit initiatives. We will continue to keep our communication channels open for feedback and suggestions.	



7.3 Ongoing non-statutory engagement

In addition to our early-engagement workshops, we have continued to engage with stakeholders and the community, offering multiple opportunities to share feedback and participate in the non-statutory consultation process.

Table 2: Summary of ongoing non-statutory engagement activity

Consultation activity	Summary
Briefing meetings with local political representatives	<p>Requests for briefing meetings have been met, with the project team attending both online presentations and in-person meetings.</p> <p>These meetings were designed to provide an overview of the Scheme, engagement to date and planned activities.</p>
Ongoing engagement with consultees	<p>Meetings with local stakeholders, such as parish councils, local residents and landowners, have been offered and attended.</p> <p>Meetings with statutory and technical consultees are also ongoing to support the EIA and masterplanning process.</p>
Communication channels	<p>Ongoing community contact has been maintained through engagement channels, including the managed inbox. Queries have continued to be addressed promptly.</p> <p>These channels have also been used to maintain contact with key stakeholders, including Norfolk Wildlife Trust, the Westacre Estate and local planning authorities.</p>





8. Who we are consulting

We have devised a Primary Consultation Zone (PCZ) for the statutory consultation within the area of the host local planning authority of Breckland Council and the neighbouring local planning authority of the Borough Council of King's Lynn and West Norfolk. The PCZ is shown in Appendix 2.

The area extends up to two kilometres from the proposed site boundaries (within which the solar PV arrays and associated development would be located) with additional extensions around residential clusters, including:

- Swaffham;
- Narborough;
- West Acre;
- Castle Acre; and
- Sporle with Palgrave.

The PCZ was extended following our early-engagement workshops to account for changes to the Site's red-line boundary. It is considered sufficient to engage with members of the local community who may be directly or indirectly impacted by the Scheme as a result of its construction, operation, maintenance or decommissioning.

The PCZ contains approximately 7,000 residential and business addresses.

In addition to local residents and businesses in the PCZ, we will also be consulting the following groups:

- **Landowners with an interest in land that may be affected by the Scheme;**

- **Statutory consultees, such as:**

- Norfolk County Council;
- Host parish councils;
- Host and neighbouring local planning authorities;
- Technical stakeholders, such as the Environment Agency and Historic England;
- Airfields and aerodromes within the vicinity of the Site; and
- Norfolk Fire and Rescue Service.

- **Non-statutory consultees, such as:**

- Members of Parliament;
- Neighbouring parish councils;
- Local government elected representatives;
- Schools and colleges in the PCZ;
- Norfolk Wildlife Trust; and
- Local interest groups (see Appendix 3), including:
 - Community groups, voluntary organisations, faith communities;
 - Environmental groups in the PCZ; and
 - Organisations representing specific groups in society, such as Age Concern UK Norfolk and local disability groups.

Members of the general public will be notified of the consultation via notices in local, regional and national newspapers. We will also ask parish councils and parish meetings to publicise the consultation on their noticeboards.





9. How we will consult

During the statutory consultation, we will use a range of methods to ensure an inclusive, meaningful and open consultation. We will use digital and non-digital methods of communication to ensure that all stakeholders can access our consultation.

A proposed schedule for all engagement methods and materials is set out in Table 3.

Table 3: Engagement methods and materials

Consultation methods	
Method	Detail
Briefing meetings with key members from both the District and County Council	We will invite key members and local political representatives from Breckland Council, Norfolk County Council and the Borough Council of King's Lynn and West Norfolk to an introductory briefing ahead of the public launch of the statutory consultation. The timing of these meetings will be based on expressions of interest; however, we will aim to arrange them at the convenience of participants.
Briefing meetings with parish councils	We will invite local political representatives from host and neighbouring parish councils to attend an introductory briefing meeting ahead of the public launch of the statutory consultation. These meetings will be held separately from those scheduled for Breckland Council, Norfolk County Council and the Borough Council of King's Lynn and West Norfolk.
Consultation events	We will be holding four consultation events at locations within or in the immediate vicinity of the PCZ that are accessible by public and private transport. They will be advertised in consultation leaflets, in the local media and at the local information point. Members of the project team will be at these events to discuss the proposal in more detail and answer any questions. Hard copies of selected materials will also be available to view and take away, with all materials available in digital format via the website.



Consultation events	<p>The locations of the events are as follows:</p> <table><tr><th>Location</th><th>Date</th><th>Event time</th></tr><tr><td>Sporle Community Centre, 78 The Street, Sporle, King’s Lynn, PE32 2DR</td><td>Saturday 31 May 2025</td><td>11:00–17:00</td></tr><tr><td>Narborough Community Centre, Chalk Lane, Narborough, PE32 1SR</td><td>Monday 2 June 2025</td><td>10:00–14:00</td></tr><tr><td>Swaffham Assembly Rooms, 1 Market Place, Swaffham, PE37 7AB</td><td>Wednesday 11 June 2025</td><td>12:00–19:00</td></tr><tr><td>Westacre Theatre, River Road, West Acre, King’s Lynn, PE32 1UA</td><td>Friday 20 June 2025</td><td>10:00–14:00</td></tr></table> <p>Events will be held on a range of days and times, including during the evening and at weekends, to accommodate different schedules.</p> <p>If for any reason these events need to be rearranged, this will be communicated on the Scheme website, to key stakeholders and those who have registered to receive updates on the Scheme via the mailing list.</p>	Location	Date	Event time	Sporle Community Centre, 78 The Street, Sporle, King’s Lynn, PE32 2DR	Saturday 31 May 2025	11:00–17:00	Narborough Community Centre, Chalk Lane, Narborough, PE32 1SR	Monday 2 June 2025	10:00–14:00	Swaffham Assembly Rooms, 1 Market Place, Swaffham, PE37 7AB	Wednesday 11 June 2025	12:00–19:00	Westacre Theatre, River Road, West Acre, King’s Lynn, PE32 1UA	Friday 20 June 2025	10:00–14:00
Location	Date	Event time														
Sporle Community Centre, 78 The Street, Sporle, King’s Lynn, PE32 2DR	Saturday 31 May 2025	11:00–17:00														
Narborough Community Centre, Chalk Lane, Narborough, PE32 1SR	Monday 2 June 2025	10:00–14:00														
Swaffham Assembly Rooms, 1 Market Place, Swaffham, PE37 7AB	Wednesday 11 June 2025	12:00–19:00														
Westacre Theatre, River Road, West Acre, King’s Lynn, PE32 1UA	Friday 20 June 2025	10:00–14:00														
Webinars	<p>Two webinars will be held for stakeholders to join via telephone or online via Livestorm, an online web conferencing platform for webinars and virtual meetings.</p> <p>Attendees of the webinars will be able to ask questions that will be answered by the project team during the webinar. Questions will be answered following the presentation and within the time available. Any remaining unanswered questions will be answered in writing after the event, if the participant contacts the Community Relations Team to resubmit the question.</p> <p>The webinar sessions will be hosted at times in the day and in the evening to accommodate different schedules.</p> <p>The dates and times of the webinars are as follows:</p> <table><tr><th>Date</th><th>Time</th></tr><tr><td>Thursday 5 June 2025</td><td>12:30–13:30</td></tr><tr><td>Wednesday 25 June 2025</td><td>18:30–19:30</td></tr></table>	Date	Time	Thursday 5 June 2025	12:30–13:30	Wednesday 25 June 2025	18:30–19:30									
Date	Time															
Thursday 5 June 2025	12:30–13:30															
Wednesday 25 June 2025	18:30–19:30															



Webinars	<p>We will require attendees to register for these online events in advance via the automated registration form on the Livestorm website. The link to the registration form for the webinars will be available on the Scheme website.</p> <p>Instructions on how to register and attend the webinars will also be provided on the Scheme website.</p> <p>The webinars will be accessible via web browser and will not normally require attendees to download additional software.</p> <p>If for any reason these webinars need to be rearranged, this will be communicated on the Scheme website, to key stakeholders and those who have registered to receive updates on the Scheme via the mailing list.</p>
Local information point	<p>Hard copies of the Consultation Information Booklet and the Consultation Feedback Form will be available to take away from the following local information point:</p> <p>Swaffham Library, The Pightle, Swaffham, PE37 7DF</p> <p>Printed reference copies of the SoCC, PEIR and NTS will also be available to view. Electronic copies of the SoCC, PEIR and NTS will be available to view and download. While access to the computer at the library is free, a membership for the library may be required.</p> <p>Stakeholders will also be able to request hard copies of selected consultation materials to be sent to them free of charge. The consultation materials that will be available free of charge, upon request, are:</p> <ul style="list-style-type: none">• Statement of Community Consultation;• Consultation Information Booklet;• Consultation Feedback Form;• Consultation Newsletter; and• NTS. <p>A hard copy of the PEIR can be provided on request, though there will be a cost associated with this. The cost of printing the PEIR is yet to be confirmed.</p>



Scheme website	<p>The Scheme website (www.drovesolarfarm.co.uk) is live and will be updated to publicise the statutory consultation and how to find out more information and provide feedback.</p> <p>All statutory consultation documents (mentioned above) will be presented digitally and available for download, free of charge, from the website. Information made available at the consultation events will also be published on the website.</p>
Consultation Newsletter	<p>A Consultation Newsletter, posted to all addresses in the PCZ, will provide an overview of the Scheme, the consultation and how people can get involved. The Consultation Newsletter will indicate where the other consultation documents can be accessed and publicise the consultation events, including locations, dates and timings.</p> <p>The Consultation Newsletter will also be emailed to key stakeholders.</p>
Consultation Information Booklet	<p>The Consultation Information Booklet will contain a summary of the proposals for the Scheme and how the design has developed following the non-statutory consultation, including maps illustrating the Scheme design.</p> <p>It will also contain information on the public consultation events, such as the date, time and location of the exhibitions and webinars. It will also provide details of the local information point hosting consultation materials.</p>
Consultation Feedback Form	<p>An online form will allow consultees to provide feedback on the Scheme. This will be accessible via the Scheme website.</p> <p>The form will be available in hard copy on request, at in-person consultation events and at the information point. Completed hard copies can be returned to the project team at consultation events or via Royal Mail – FREEPOST THE DROVES SOLAR FARM (no stamp or further details required).</p>



Preliminary Environmental Informational Report (PEIR) and Non-Technical Summary (NTS)	<p>The PEIR will describe the Scheme and contain a preliminary assessment of the potential significant environmental effects and an outline of measures to mitigate adverse effects.</p> <p>The PEIR will be based on information available at that time, but the assessments will be developed once further detail is available (such as further survey work) and reported within an ES submitted with the DCO application.</p> <p>An NTS of the PEIR can also be downloaded free of charge from the website electronically at the local information point, and will be available in printed format to view at consultation events.</p>
Exhibition materials	<p>Public exhibition events will contain exhibition boards to provide details of the Scheme.</p> <p>The exhibition boards will be available at consultation events and on the website.</p>
Statement of Community Consultation (SoCC)	<p>This SoCC will be made available online throughout the consultation and free of charge in hard copy on request. A hard copy of the SoCC will also be available to inspect at the local information point once the Section 47 notice has been publicised.</p>
Materials in alternative formats	<p>Stakeholders will be able to request hard copies of selected consultation materials to be sent to them free of charge. The consultation materials that will be available free of charge, upon request, are:</p> <ul style="list-style-type: none">• SoCC• Consultation Information Booklet• Consultation Feedback Form• Consultation Newsletter• NTS. <p>All requests should be made to the project team by email at info@drovessolarfarm.co.uk, by freephone on 0800 0129 154 or at the consultation events.</p>

All statutory consultation documents will be available to view and download free of charge online, on the website, and available to view in hard copy at the consultation events.

Stakeholders will also be able to request hard copies of selected consultation materials to be sent to them free of charge. A hard copy of the PEIR can be provided on request, though there will be a cost associated with this. The cost of printing the PEIR is yet to be confirmed.



10. Promoting the consultation

A range of methods will be used to promote the consultation to a wider audience, as listed in Table 4. In addition, statutory notices will be published in accordance with Section 48 of the Act.

These notices will be published once in a national newspaper and the *London Gazette* and twice (across two successive weeks) in local newspapers.

Table 4: Methods to promote the statutory consultation

Method	Detail
Consultation Newsletter	<p>A Consultation Newsletter, posted to all addresses in the PCZ, will provide an overview of the Scheme, the consultation and how people can get involved. The Consultation Newsletter will indicate where the other consultation documents can be accessed and publicise the consultation events, including locations, dates and timings.</p> <p>Copies of the Consultation Newsletter will also be emailed electronically to key stakeholders.</p> <p>The Consultation Newsletter will contain a QR code to direct people to the Scheme website.</p>
Consultation Leaflets	<p>Consultation Leaflets will be sent electronically to key stakeholders, such as community groups, asking them to publicise the consultation within their networks. Appendix 3 contains the list of stakeholders who will be asked to publicise the Consultation Leaflet, though this will be at their discretion.</p> <p>Printed copies of the Consultation Leaflet will be available at the local information point.</p> <p>Hard copies of the Consultation Leaflet will be distributed to residents and businesses within the PCZ approximately three weeks into the consultation period to boost engagement in the consultation.</p> <p>These Consultation Leaflet will contain a QR code to direct people to the Scheme website.</p>
Consultation Poster	<p>We will ask the local information point if they can display a hard copy of the Consultation Poster on their noticeboards, but this will be at their discretion.</p> <p>These Consultation Posters will contain a QR code to direct people to the Scheme website.</p>



Press release	One press release publicising the upcoming consultation, and how the community and wider stakeholders can get involved, will be issued. The press release will be issued to national and regional newspapers seven days in advance of the launch of the statutory consultation.
Stakeholder briefings	<p>We will issue communications to key stakeholders, including local political representatives (councillors and MPs) and parish council clerks representing wards, constituencies and parishes within the PCZ to provide information about the Scheme and invite and invite them to take part in the consultation.</p> <p>These will be issued to:</p> <ul style="list-style-type: none">• host constituency and neighbouring constituency area MPs;• elected representatives at Norfolk County Council;• elected representatives at the Borough Council of King's Lynn and West Norfolk;• elected representatives at Breckland Council;• host parish councils;• neighbouring local authorities;• neighbouring parish councils; and• local interest groups, such as community and environmental groups (see Appendix 3). <p>We will, in addition to the in-person and webinar events listed above, consider requests for additional briefing meetings with stakeholders.</p>
Community outreach	<p>The project team will email local interest groups ahead of the statutory consultation, via the managed inbox. A full list of groups to be contacted can be found in Appendix 3.</p> <p>If we successfully contact representatives of these groups, we will request that a Consultation Poster be displayed on relevant noticeboards.</p> <p>We will also encourage these groups to promote the consultation through their preferred channels, such as Facebook, though this will remain at their discretion.</p>
Local authority communication channels	The project team will contact the communications teams at Breckland Council, Norfolk County Council and the Borough Council of King's Lynn and West Norfolk to request that the consultation be promoted through their channels, such as Facebook.



11. Inclusive consultation

We want to ensure that our consultation is inclusive. We recognise that some people or groups may have difficulties taking part in the consultation process for a range of reasons.

Consultation methods used to engage with these groups are set out in Table 5. We will continue to liaise with local organisations representing groups of people with these characteristics, where required, to ensure accessibility to the consultation and that our approach best meets the needs of their members and those they represent.

Appendix 3 lists these local interest groups.

Table 5: Methods to widen inclusion	
Group	Consultation methods used to engage with these groups
Older people	<ul style="list-style-type: none">• Freepost and the freephone information line.• Providing important information in both digital and non-digital formats and providing alternative formats, such as braille and large print (upon request).• Providing paper copies of materials at the local information point.• Face-to-face events at several locations, with members of the project team available to assist with completing feedback responses.
People with visual impairments	<ul style="list-style-type: none">• Providing important information in both digital and non-digital formats and providing alternative formats, such as dementia-friendly, braille and large print (upon request).• Option to enlarge text on the website.• Freephone information line.• Face-to-face events at several locations, with members of the team available to assist with completing feedback responses.
People with limited mobility	<ul style="list-style-type: none">• Directly mailing the Consultation Newsletter and leaflet to all stakeholders within the PCZ and providing details of how to both access paper copies of other consultation documents and provide feedback online and by post.• Online engagement webinars to negate the need to travel to public events.• Freephone information line and freepost.



People with hearing impairments	<ul style="list-style-type: none">• Directly mailing the Consultation Newsletter to all stakeholders within the PCZ and providing details of how to access paper copies of other project documents and how to provide feedback by post.• Providing important information in both digital and non-digital formats.• Automated subtitles will be available at webinars to ensure each session is accessible.
Geographically isolated individuals or communities	<ul style="list-style-type: none">• Directly mailing the Consultation Newsletter and leaflet to all stakeholders within the PCZ and providing details of how to access paper copies of other project documents and provide feedback by post.• Advertising the availability of telephone callbacks for stakeholders who would like to discuss the Scheme further with the project team.



12. Enquiry channels

The following enquiry channels will be available throughout the statutory consultation for members of the community and other stakeholders to contact the project team, ask questions and request further information or printed copies of consultation materials and documents. These channels are set out in Table 6 and will continue to be active throughout the pre-application period.

Table 6: Information channels for The Drovers Solar Farm		
Method	Contact details	Hours of operation
Telephone	Freephone 0800 0129 154	9:00–17:30 weekdays (with an answerphone facility to take messages outside these hours).
Email	info@drovessolarfarm.co.uk	People can email 24 hours a day, with emails being monitored between 9:00 and 17:30 weekdays. We will aim to acknowledge all emails received as soon as practicable and will endeavour to provide a substantive response within 10 working days of receipt.
Post	FREEPOST THE DROVES SOLAR FARM	Should enquiries received via post require a response, this will be issued within 10 working days of receipt. Urgent enquiries should be directed to the Scheme's email address or freephone line.



13. Responding to the statutory consultation

During the statutory consultation period, respondents will be able to submit their feedback relating to the Scheme. **All responses must be received by 23:59 on the closing date..** Responses received after that date may not be considered. We will allow an additional two-week period to receive responses via post.

13.1 How to respond to the consultation

Consultation responses can be made in the following ways:

- Completing the Feedback Form online, which can be accessed via the Scheme website: **www.drovessolarfarm.co.uk**.
- Completing a printed Feedback Form, which can be collected from a consultation event or the local information point, or on request by contacting the project team. Completed forms can be handed to the project team at events, scanned and emailed back to **info@drovessolarfarm.co.uk**, or sent to **FREEPOST THE DROVES SOLAR FARM (no stamp or further details required)**.

- Emailing comments to **info@drovessolarfarm.co.uk**.
- Writing to us at **FREE POST THE DROVES SOLAR FARM (no stamp or further details required)**. The exact freepost address is yet to be confirmed.

The project team can also be contacted by freephone on **0800 0129 154**. They can assist with any questions about the Scheme or the consultation. In exceptional circumstances, we will take feedback over the phone; however, this will need to be arranged in advance.

14. How we will use consultation feedback

When the statutory consultation has closed, we will carefully consider the feedback and finalise the proposed DCO application for the Scheme.

The feedback we receive will be included as part of our DCO application in a Consultation Report. This report will detail how the feedback from the consultation has shaped and influenced the final proposals in the DCO application. All responses submitted during the statutory consultation will be addressed within the Consultation Report.

Any responses published in the Consultation Report will have sensitive personal details redacted. Please note that PINS can request a copy of all consultation responses and that personal details may be disclosed to PINS. Further information can be found in the privacy notice on the Scheme website.

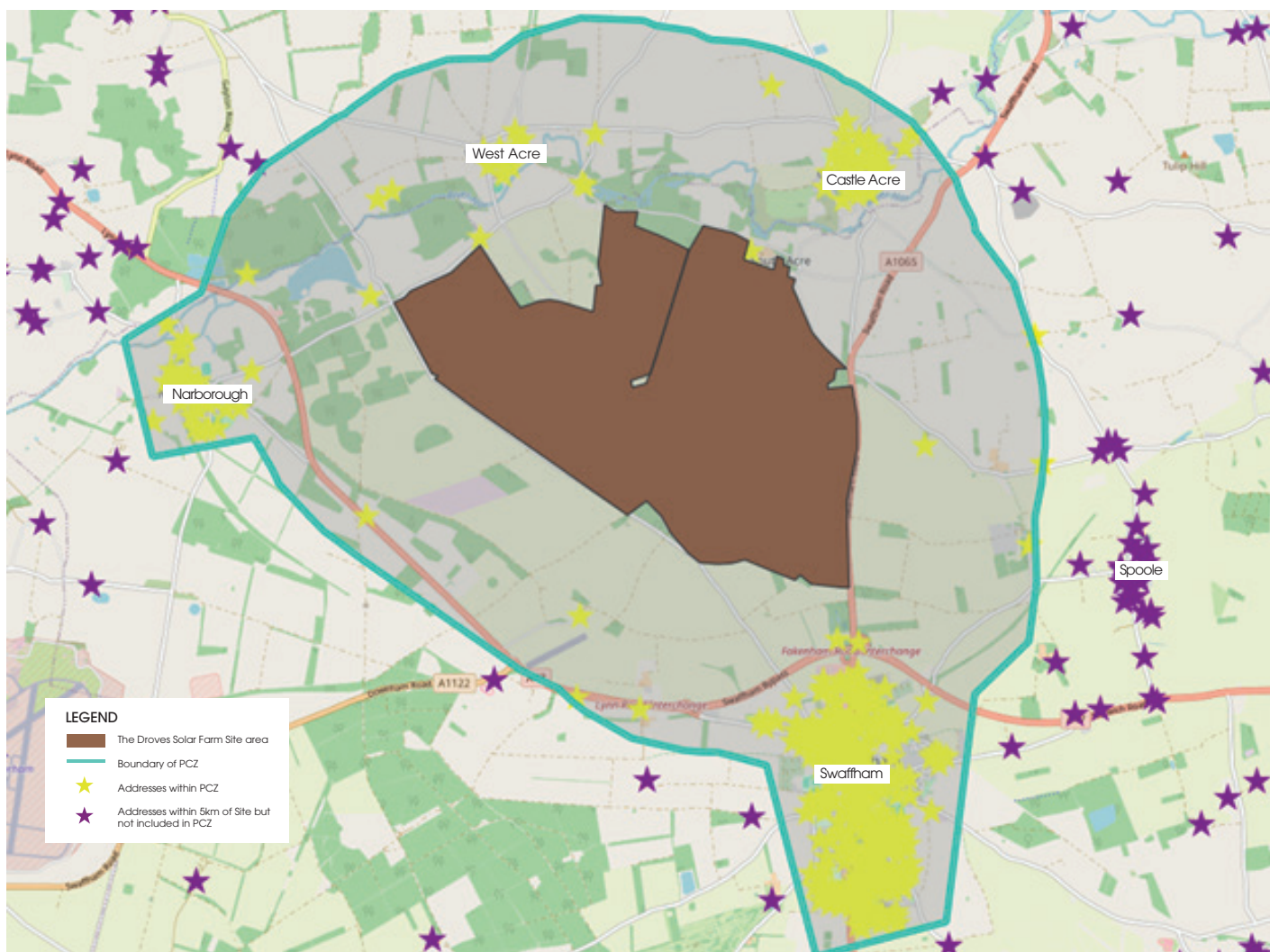
15. Further consultation

If, as a result of feedback, we consider it necessary to undertake further targeted or supplementary consultation because proposals for the Scheme have changed, this will be undertaken, so far as relevant and proportionate, in accordance with the principles and methods set out in this SoCC.



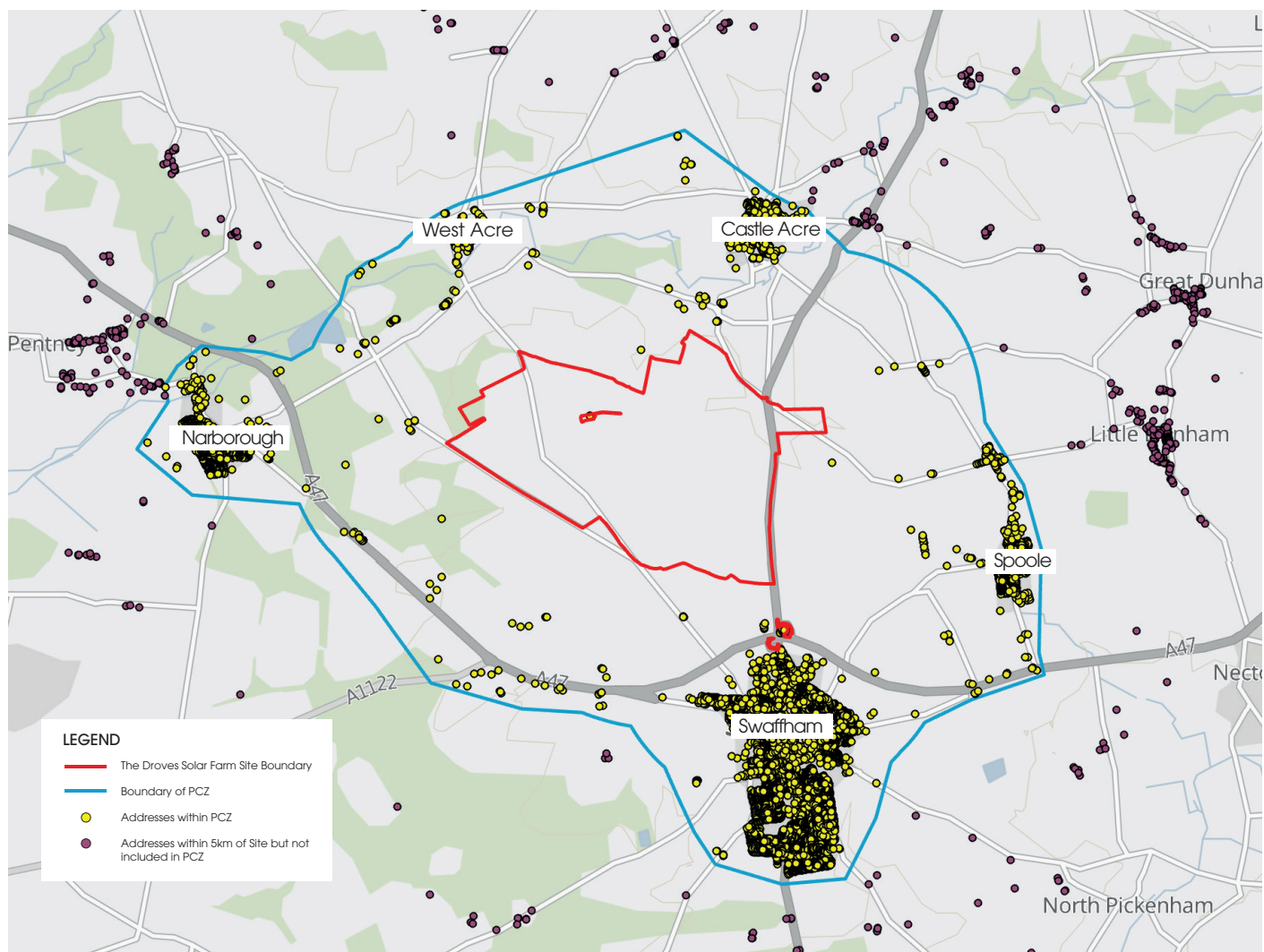
Appendices

Appendix 1 – PCZ





Appendix 2 – Revised PCZ ahead of statutory consultation



**Appendix 3 – The local interest groups**

Animal/Environmental Groups	<ul style="list-style-type: none">• British Horse Society – East of England• Get Norfolk Greener• Norwich Friends of the Earth• Climate Norfolk• Extinction Rebellion King's Lynn and West Norfolk• King's Lynn KClimate Concern• CPRE Norfolk• The Breckland Farmers Wildlife Network• West Norfolk Conservation Volunteers• Gaywood Valley Conservation Group• Breckland Flora Group• Breckland Local Group• Nar Valley Ornithological Society• Norfolk Birding• Norfolk and Norwich Bat Group• Young Activist Network – Environmental Campaign Group• Royal Norfolk Agricultural Association• Norfolk Young Farmers and Countrysiders Club• Rambler's Association – Mid Norfolk Group• Norfolk Biodiversity Partnership• Mid Norfolk Conservation Volunteers• Norfolk Beekeepers' Association• Norfolk Butterfly Conservation• Norfolk Biodiversity Information Service
Carers	<ul style="list-style-type: none">• ASD Helping Hands• Caring Friends for Cancer• Carers Matter Norfolk• Young Carers Matter Norfolk



Churches local to the Scheme	<ul style="list-style-type: none"> • Nar Valley Group • Breckland Christian Fellowship • St Mary's (Sporle) • St Peter & St Paul (Swaffham) • Swaffham Baptist • Swaffham Methodist Church • Fountain of Life (Ashill) • St Nicholas Ashill • Our Lady of Pity (Swaffham)
Community support	<ul style="list-style-type: none"> • Norfolk Good Neighbours • Community Action Norfolk (CAN) • Norfolk Community Foundation
Civic and history groups	<ul style="list-style-type: none"> • The Breckland Society • King's Lynn Civic Society • West Norfolk & King's Lynn Archaeological Society • Swaffham Heritage
Educational establishments (within PCZ)	<ul style="list-style-type: none"> • Pre-school/Nurseries <ul style="list-style-type: none"> • Little Pedlars Nursery (Swaffham) • Sporle Pre-School • Swaffham Preschool Playgroup • Teenie Icen's Day Nursery • Primary schools <ul style="list-style-type: none"> • Narborough Church of England VC Primary School • New Castle Acre Church of England VC Primary School • Sacred Heart Catholic Primary School (Swaffham) • Sporle Church of England Primary School • Swaffham Church of England Primary School • Heartwood Church of England Primary School (Swaffham) • Combined – Primary and secondary schools <ul style="list-style-type: none"> • OneSchool Global, Swaffham Campus • Secondary schools <ul style="list-style-type: none"> • The Nicholas Hamond Academy
Lesbian, Gay, Bisexual, Transgender, Queer, Intersex, Asexual (LGBTQIA+) community	<ul style="list-style-type: none"> • LGBTQ+ Project (Supporting Norfolk and Waveney) • OASIS Norfolk • Queer Norfolk



Mental health, well-being and recovery support groups	<ul style="list-style-type: none"> Arts for Health – Creative Arts East MAP Young People Matthew Project MensCraft Norfolk and Waveney Mind One to One Project – West and North Norfolk Swaffham and District Mental Health Association Time Norfolk
Military	<ul style="list-style-type: none"> Help for Heroes The Royal British Legion (Swaffham) Scotty’s Little Soldiers SSAFA Norfolk
Older people	<ul style="list-style-type: none"> Age Concern Swaffham and District Age UK Norfolk
Other organisations and local community groups	<ul style="list-style-type: none"> Dereham Trefoil Guild Dereham Round Table Mid-Norfolk Singers Swaffham Bell Ringers Norfolk Local Access Forum West Norfolk Artists Association West Norfolk Aviation Society Norfolk Federation of Women’s Institutes
Parent groups	<ul style="list-style-type: none"> Norfolk Early Childhood and Family Service (ECFS) Just One Norfolk Gingerbread (Norfolk)
People with disabilities/learning difficulties	<ul style="list-style-type: none"> Alzheimer’s Society Norfolk Asperger East Anglia Dereham Deaf Social Club Equal Lives Hear for Norfolk (NDA) MS Society (Norwich and District Group) Norfolk Learning Disability Partnership Vision Norfolk West Norfolk Autism Group West Norfolk Deaf Association West Norfolk Disability Information Service



Religious organisations	<ul style="list-style-type: none"> • West Norfolk Islamic Centre
Socio-economic support groups	<ul style="list-style-type: none"> • Dereham Food Cabin • Nourishing Norfolk Network • Norfolk Strategic Housing Partnership • Better Together Norfolk
Sports and outdoor activities groups	<ul style="list-style-type: none"> • Active Norfolk • Cycling Club Breckland • Dereham Runners AC • Dereham Town Football Club • Dereham Walkers are Welcome • King's Lynn Cycling Club • Nar Valley Long Distance Walkers Association • Swaffham Cricket Club • Swaffham Golf Club • Swaffham Town Bowls Club • Swaffham Rugby Union Football Club • Castle Acre Playing Field Association • Castle Acre Coronation Bowls Club • Castle Acre Cricket Club • Castle Acre Swifts Football Club • West Norfolk Walking for Health
Travellers	<ul style="list-style-type: none"> • Friends, Families and Travellers • One Voice 4 Travellers
Young people	<ul style="list-style-type: none"> • Brownies and Rainbows Norfolk Girlguiding • King's Lynn Youth Club • Swaffham and District Young Farmers' Club • Norfolk Federation of Young Farmers Clubs • Norfolk Youth Parliament • 1st Swaffham Scouts • South West Norfolk Division – GirlGuides

**Appendix 4 – Glossary of terms**

Consultation Report	A document that details all the feedback gathered during the consultation phase of a project. It summarises key points raised and outlines how the feedback influenced, or was considered in, the project's design and planning.
Department for Energy Security and Net Zero (DESNZ)	A ministerial department of the Government of the United Kingdom responsible for ensuring the country has a secure, affordable and sustainable energy supply.
Development Consent Order (DCO)	A type of planning permission required for large-scale infrastructure projects in the UK. The application for consent to undertake an NSIP is made to the PINS, which will consider the application and make a recommendation to the Secretary of State, who will then decide on whether development consent should be granted for the proposed scheme.
Environmental Impact Assessment (EIA)	A process used to evaluate the likely significant environmental effects of a project. It identifies and assesses ways to reduce any significant impacts on the environment.
Environmental Statement (ES)	A document that presents the EIA.
Examining Authority	The Inspector, or the Panel of Inspectors, appointed to conduct the examination of the DCO application.
Infrastructure Planning (Environmental Impact Assessment) Regulations 2017	Regulations that set out requirements for assessing the environmental impact of major infrastructure projects.
National Grid	The electricity and gas transmission network that distributes energy across the UK.
Nationally Significant Infrastructure Project (NSIP)	Major infrastructure developments in England and Wales. They can include projects such as power plants, large renewable energy projects, new airports, airport extensions and major road projects.
Photovoltaic (PV)	A non-mechanical device that converts sunlight directly into electricity.
Planning Act 2008	Legislation (referred to in this document as "the Act") that sets out the process for approving large infrastructure projects.



Planning Inspectorate (PINS)	An independent government agency in the UK responsible for examining and making recommendations on significant planning and development projects.
Preliminary Environmental Information Report (PEIR)	A document prepared during the early stages of a project to assess potential environmental impacts. It provides details on preliminary findings and proposed mitigation measures.
Primary Consultation Zone (PCZ)	The areas surrounding a project where consultation activities are focused. People, businesses and organisations within this area are most likely to experience direct and indirect impacts from the Scheme.



Contact us

If you have any questions, or comments, or would like to join our mailing list, please contact our Community Relations Team using the details below.



Email us at: info@drovessolarfarm.co.uk



Community Relations Freephone: 0800 0129 154

(Our phone lines are monitored 9:00–17:30 Monday to Friday, with an answerphone facility available outside of these hours.)



Visit our website: www.drovessolarfarm.co.uk

2 Compliance with the SoCC



Section of SoCC	Commitment made	Evidence of compliance
N/A	<p>Consulted and had regard for comments on the SoCC from:</p> <ul style="list-style-type: none"> Breckland Council; Norfolk County Council; and Borough Council of King's Lynn & West Norfolk 	<p>Comments were received from Breckland Council, Norfolk County Council and the Borough Council of King's Lynn & West Norfolk.</p> <p>The Applicant had regard to all comments and incorporated changes to the SoCC where practicable. The Applicant sent each authority a formal response to outline how each comment had been considered.</p>
6.2	<p>The approach to consultation consists of two phases:</p> <ul style="list-style-type: none"> ongoing engagement and early engagement workshops (non-statutory consultation) held during September–October 2024; and a statutory consultation period lasting seven weeks in summer 2025. 	<p>The Applicant is committed to continued engagement with stakeholders.</p> <p>Early engagement began in August 2024, and included introductory briefing meetings with local political representatives, and an initial newsletter posted to local communities included in the first iteration of the PCZ. The Applicant also held a series of early-engagement workshops in September 2024 and October 2024.</p> <p>Further details about early engagement activities, and how the Applicant had regard to the feedback received, can be found in Section 6 and Section 7 of the SoCC.</p> <p>A seven-week statutory consultation was held between Wednesday 21 May 2025 and Wednesday 9 July 2025.</p>
8	<p>We have devised a Primary Consultation Zone (PCZ) for the statutory consultation within the area of the host local planning authority of Breckland Council and the neighbouring local planning authority of the Borough Council of King's Lynn & West Norfolk. The PCZ is shown in Appendix 2. The area extends up to two kilometres from the proposed site boundaries (within which the solar PV arrays and associated development would be located) with additional extensions around residential clusters, including:</p>	<p>The PCZ was extended following early-engagement and non-statutory consultation to account for changes to the Site.</p> <p>The PCZ was extended from approximately 5,760 addresses to approximately 7,000 addresses. The revised PCZ extended 2 km from the Site with additional extensions around residential clusters in proximity to the Site.</p> <p>The PCZ was included in the SoCC and agreed with Breckland Council, Norfolk County Council and the Borough Council of King's Lynn & West Norfolk during the</p>



	<ul style="list-style-type: none"> • Swaffham; • Narborough; • West Acre; • Castle Acre; and • Sporle with Palgrave. <p>The PCZ was extended following our early-engagement workshops to account for changes to the Site's red-line boundary. It is considered sufficient to engage with members of the local community who may be directly or indirectly impacted by the Scheme as a result of its construction, operation, maintenance or decommissioning. The PCZ contains approximately 7,000 residential and business addresses.</p>	<p>SoCC consultation in February–March 2025.</p> <p>The PCZ was used to inform both the scope of the statutory consultation and the selection of event locations, with in-person events held at venues within the PCZ to ensure accessibility for affected communities. A Consultation Newsletter was also posted to all addresses in the revised PCZ on Tuesday 6 May 2025.</p>
8	<p>In addition to local residents and businesses in the PCZ, we will also be consulting the following groups:</p> <p>landowners with an interest in land that may be affected by the Scheme;</p> <p>statutory consultees, such as:</p> <ul style="list-style-type: none"> • Norfolk County Council; • host parish councils; • host and neighbouring local planning authorities; • technical stakeholders, such as the Environment Agency and Historic England; • airfields and aerodromes within the vicinity of the Site; and • Norfolk Fire and Rescue Service. <p>non-statutory consultees, such as:</p> <ul style="list-style-type: none"> • Members of Parliament; • neighbouring parish councils; • local government elected representatives; • schools and colleges in the PCZ; • Norfolk Wildlife Trust; and 	<p>All consultee groups were contacted as part of the statutory consultation.</p> <p>Landowners with an interest in land that may be affected by the Scheme were notified and invited to participate in the statutory consultation on Thursday 15 May 2025, ahead of the launch on Wednesday 21 May 2025.</p> <p>Non-statutory consultees were notified and invited to participate in the statutory consultation on Thursday 15 May 2025, ahead of the launch on Wednesday 21 May 2025. A full list of consultees who received an invitation can be found in Appendix 3.</p>



	<ul style="list-style-type: none"> • local interest groups (see Appendix 3), including: <ul style="list-style-type: none"> ○ community groups, voluntary organisations and faith communities; ○ environmental groups in the PCZ; and ○ organisations representing specific groups in society, such as Age Concern UK Norfolk and local disability groups. 	
	<p>We will also ask parish councils and parish meetings to publicise the consultation on their noticeboards.</p>	<p>The Consultation Newsletter and Consultation Leaflet and Poster were sent to host and neighbouring parish councils via email on Friday 9 May 2025.</p> <p>In the accompanying cover note, it was suggested that councils share the materials within their networks and display them on local noticeboards; however, this was left to their discretion. The Applicant also noted hard copies could be provided upon request.</p>
9 (Table 3)	<p>We will invite key members and local political representatives from Breckland Council, Norfolk County Council and the Borough Council of King's Lynn & West Norfolk to an introductory briefing ahead of the public launch of the statutory consultation. The timing of these meetings will be based on expressions of interest; however, we will aim to arrange them at the convenience of participants.</p>	<p>The Applicant invited key members and local political representatives from Norfolk County Council, Breckland Council and the Borough Council of King's Lynn and West Norfolk to an introductory briefing on Wednesday 12 March 2025.</p> <p>The invitation letter included several suggested dates and times, and invited stakeholders to register their interest and preference by email.</p> <p>A follow-up email was sent on Wednesday 26 March 2025 to remind stakeholders to share their interest and preferences for the briefing.</p> <p>Based on the preferences expressed by respondents, the Applicant finalised two dates and times for the introductory briefing meetings. These were shared with everyone who had registered their interest, on Monday 7 April 2025.</p> <p>The briefings were held on:</p>



		<ul style="list-style-type: none"> • Tuesday 29 April 2025 09:30–10:30; and • Thursday 8 May 2025 12:30–13:30. <p>The briefings were attended by 10 representatives from Breckland Council and Norfolk County Council.</p>
9 (Table 3)	<p>We will invite local political representatives from host and neighbouring parish councils to attend an introductory briefing meeting ahead of the public launch of the statutory consultation.</p> <p>These meetings will be held separately from those scheduled for Breckland Council, Norfolk County Council and the Borough Council of King's Lynn & West Norfolk.</p>	<p>Representatives from host and neighbouring parish councils were invited to a statutory consultation briefing meeting on Wednesday 9 April 2025.</p> <p>Based on expressed preference, the Applicant shared two virtual briefing slots for parish councils to register for.</p> <p>The briefings were held via Microsoft Teams on Tuesday 6 May 2025 at 12:30–13:30 and 18:30–19:30.</p> <p>The briefings were attended by representatives from Castle Acre Parish Council, Necton Parish Council, Sporle with Palgrave Parish Council and South Acre Parish Council.</p> <p>A request for an additional in-person consultation event in Castle Acre from Castle Acre Parish Council was subsequently actioned by the Applicant. The additional event was held at the Castle Acre Village Hall on 12 June 2025, from 17:30–19:30.</p>
9 (Table 3)	<p>We will be holding four consultation events at locations within or in the immediate vicinity of the PCZ that are accessible by public and private transport. They will be advertised in consultation leaflets, in the local media and at the local information point.</p> <p>Members of the project team will be at these events to discuss the proposal in more detail and to answer any questions. Hard copies of selected materials will also be available to view and take away, with all materials available in digital format via the website.</p>	<p>Four in-person consultation events were scheduled at accessible locations within the PCZ. The events were held as follows:</p> <ul style="list-style-type: none"> • Saturday, 31 May 2025, 11:00–17:00 at Sporle Community Centre, 78 The Street, Sporle, King's Lynn PE32 2DR; • Monday, 2 June 2025, 10:00–14:00 at Narborough Community Centre, Chalk Lane, Narborough PE32 1SR; • Wednesday, 11 June 2025, 12:00–19:00 at Swaffham Assembly Rooms, 1 Market Place, Swaffham PE37 7AB; and



	<p>The locations of the events are as follows:</p> <ul style="list-style-type: none"> • Sporle Community Centre, 78 The Street, Sporle, King's Lynn PE32 2DR – Saturday 31 May 2025, 11:00–17:00; • Narborough Community Centre, Chalk Lane, Narborough PE32 1SR – Monday 2 June 2025, 10:00–14:00; • Swaffham Assembly Rooms, 1 Market Place Swaffham, PE37 7AB – Wednesday 11 June 2025, 12:00–19:00; and • Westacre Theatre, River Road, West Acre, King's Lynn PE32 1UA – Friday 20 June 2025, 10:00–14:00. <p>Events will be held on a range of days and times, including during the evening and at weekends, to accommodate different schedules.</p> <p>If for any reason these events need to be rearranged, this will be communicated on the Scheme website, to key stakeholders and those who have registered to receive updates on the Scheme via the mailing list.</p>	<ul style="list-style-type: none"> • Friday, 20 June 2025, 10:00–14:00 at Westacre Theatre, River Road, West Acre, King's Lynn PE32 1UA. <p>In total, the four planned statutory consultation events were attended by 91 people.</p> <p>A request for an additional consultation event in Castle Acre from Castle Acre Parish Council was actioned by the Applicant. The event was held at the Castle Acre Village Hall on 12 June 2025, from 16:00–19:00.</p> <p>The additional Castle Acre event was attended by 68 people, including representatives from Castle Acre Parish Council.</p> <p>Ahead of the events the Applicant confirmed that the venues were accessible by public transport and that parking was available directly outside each venue to accommodate those using private transport.</p> <p>Members of the project team were present to answer questions and concerns directly. If they were unable to provide an answer on the day, attendees were encouraged to contact the project team via the Community Relations mechanisms (email, Freephone and Freepost).</p> <p>No consultation events required rearrangement. As a result, there was no need to notify stakeholders, the mailing list or make updates to the Scheme website in this regard.</p>
<p>9 (Table 3)</p>	<p>Two webinars will be held for stakeholders to join via telephone or online via Livestorm, an online web conferencing platform for webinars and virtual meetings.</p> <p>Attendees of the webinars will be able to ask questions that will be answered by the project team during the webinar. Questions will be answered following the presentation and within the time available. Any</p>	<p>Two webinars were held using the Livestorm platform:</p> <ul style="list-style-type: none"> • Thursday 5 June 2025, 12:30–13:30; and • Wednesday 25 June 2025, 18:30–19:30. <p>Instructions on how to register for the webinars, and the registration links, were available under the "Consultation by Collaboration" section of the Scheme</p>



	<p>remaining unanswered questions will be answered in writing after the event, if the participant contacts the Community Relations team to resubmit the question.</p> <p>The webinar sessions will be hosted at times in the day and in the evening to accommodate different schedules.</p> <p>The dates and times of the webinars are as follows:</p> <ul style="list-style-type: none">• Thursday 5 June 2025, 12:30–13:30; and• Wednesday 25 June 2025, 16:30–19:30. <p>We will require attendees to register for these online events in advance via the automated registration form on the Livestorm website. The link to the registration form for the webinars will be available on the Scheme website.</p> <p>Instructions on how to register and attend the webinars will also be provided on the Scheme website. The webinars will be accessible via web browser and will not normally require attendees to download additional software.</p> <p>If for any reason these webinars need to be rearranged, this will be communicated on the Scheme website, to key stakeholders and those who have registered to receive updates on the Scheme via the mailing list.</p>	<p>website. This section was updated ahead of the statutory consultation on Tuesday 20 May 2025.</p> <p>A link to this page was also shared directly with a stakeholder who enquired via the Community Relations inbox.</p> <p>The Livestorm platform was accessible via web browser and would not normally require attendees to download additional software.</p> <p>The webinars were at lunch time and after work to accommodate the needs of those in employment, in working families or with other commitments during standard working hours.</p> <p>To ensure accessibility, arrangements were made for participants to join the webinars via telephone, where required.</p> <p>During each webinar session, the project team delivered a presentation that mirrored the information displayed on the Exhibition Banners displayed during the in-person consultation events.</p> <p>A dedicated question-and-answer session followed the presentation, during which members of the project team were available to address queries within the allocated time.</p> <p>The Community Relations Team received one follow-up enquiry, which was responded to by the Community Relations team.</p>
9 (Table 3)	<p>Hard copies of the Consultation Information Booklet and the Consultation Feedback Form will be available to take away from the following local information point: Swaffham Library, The Pightle, Swaffham PE37 7DF.</p> <p>Printed reference copies of the SoCC, PEIR and NTS will also be available to view.</p>	<p>Hard copies of the Consultation Information Booklet, Feedback Form, Consultation Leaflet, Consultation Poster, SoCC, NTS of the PEIR and PEIR were distributed ahead of the start of statutory consultation to the following information point:</p> <ul style="list-style-type: none">• Swaffham Library. <p>Hard copies of the Consultation Information Booklet, Feedback Form, Consultation Leaflet, Consultation Poster, SoCC and</p>



	<p>Electronic copies of the SoCC, PEIR and NTS will be available to view and download.</p> <p>Although access to the computer at the library is free, a membership for the library may be required.</p>	<p>NTS were also distributed ahead of the start of statutory consultation to two community collection points:</p> <ul style="list-style-type: none">• Narborough Community Centre; and• Westacre Theatre. <p>Confirmation of delivery to each location was received on Tuesday 20 May 2025 via postal tracking. Further confirmation was received from each location during the statutory consultation period.</p> <p>Narborough Community Centre and Westacre Theatre shared confirmation via email, with photographic evidence, on Wednesday 21 May 2025 and Thursday 22 May 2025, respectively.</p> <p>Swaffham Library confirmed that all the consultation materials had been received via email on Friday 23 May 2025, with photographic evidence shared on Monday 23 June 2025.</p> <p>The opportunity was also taken to replenish the supply of materials at the information point and community collection points.</p> <p>On Monday 2 June 2025, following the event at Narborough Community Centre, it was noted that the SoCC was missing. This was replaced following the event by the Applicant.</p> <p>Additional Consultation Information Booklets and Feedback Forms were distributed to Swaffham Library on Monday 23 June 2025. This distribution ensured that the availability of the materials continued throughout the statutory consultation period.</p> <p>Narborough Community Centre confirmed via email that the NTS of the PEIR was missing on Wednesday 18 June 2025. An additional reference hard copy was subsequently distributed to Narborough Community Centre on Wednesday 25 June 2025, following an additional print run.</p> <p>During the event at Westacre Theatre on Friday 20 June 2025, the Applicant</p>
--	---	---



		<p>confirmed that all materials were available at the venue.</p> <p>The Applicant was informed of a temporary closure to Swaffham Library owing to planned refurbishment. The Applicant was notified via email on Friday 23 May 2025.</p> <p>Swaffham Library was closed from Friday 6 June 2025 to Sunday 15 June 2025 and reopened to the public on Monday 16 June 2025.</p> <p>Despite the unforeseen closure, the Applicant retained the commitment to ensuring the availability of materials over a period in excess of 28 days. The Community Relations Team did not receive any requests indicating that stakeholders had experienced difficulties accessing materials or submitting feedback as a result of the closure. The Applicant notes that a discretionary extension would have been considered had any such issues been raised. The Applicant also notes that the closure was advertised via the library's website.</p> <p>Electronic copies of all the statutory consultation materials, including the SoCC, PEIR and NTS, were available to view and download online via the Scheme website from Tuesday 20 May 2025. Free computer access was available at the local information point, Swaffham Library, for registered library members.</p>
9 (Table 3)	<p>Stakeholders will also be able to request hard copies of selected consultation materials to be sent to them free of charge. The consultation materials that will be available free of charge, upon request, are:</p> <ul style="list-style-type: none">• SoCC;• Consultation Information Booklet;• Consultation Feedback Form;• Consultation Newsletter; and• NTS.	<p>The Applicant received seven requests for hard-copy consultation information materials during the statutory consultation period.</p> <p>Stakeholders requested hard copies of the NTS of the PEIR, SoCC and Feedback Form. All requests were honoured and the hard copy materials were distributed by post free of charge.</p> <p>All consultation documents were available upon request in hard copy and in accessible formats, such as braille or large print. Requests for a printed hard copy of the PEIR (including in accessible formats)</p>



	<p>A hard copy of the PEIR can be provided on request, though there will be a cost associated with this. The cost of printing the PEIR is yet to be confirmed.</p>	<p>would have been considered on a case-by-case basis, with a typical charge of £750 to cover printing and postage costs. Requests for individual volumes would have been charged based on the cost per volume requested. No such requests were received during the consultation period.</p> <p>Details of the availability of materials and how to request them were included on the Scheme website under “Further information” on the “Consultation by collaboration” page.</p>
9 (Table 3)	<p>The Scheme website (www.drovesolarfarm.co.uk) is live and will be updated to publicise the statutory consultation and how to find out more information and provide feedback.</p> <p>All statutory consultation documents (mentioned above) will be presented digitally and available for download, free of charge, from the website. Information made available at the consultation events will also be published on the website.</p>	<p>The Scheme website was updated to publicise the statutory consultation, and how to find out more information and provide feedback, on Friday 9 May 2025.</p> <p>An additional update on Tuesday 20 May 2025 confirmed the statutory consultation was live from Wednesday 21 May 2025.</p> <p>All statutory consultation materials were available to view and download from the “Documents” page of the Scheme website on Tuesday 20 May 2025, one day ahead of the launch of the seven-week statutory consultation period.</p> <p>These included:</p> <ul style="list-style-type: none">• statutory consultation materials, including promotional materials and those displayed at the events;• indicative masterplans that were printed and shared at the events;• the PEIR, divided by Volume and Chapter, and the NTS of the PEIR; and• the SoCC. <p>The “Documents” page of the Scheme website was also updated on Friday 23 May 2025 to include the Castle Acre Consultation Event Leaflet to support its promotion.</p>
9 (Table 3)	<p>The Consultation Information Booklet will contain a summary of the proposals for the Scheme and how the design has developed following</p>	<p>The Consultation Information Booklet was prepared ahead of the start of statutory consultation.</p>



	<p>the non-statutory consultation, including maps illustrating the Scheme design.</p> <p>It will also contain information on the public consultation events, such as the date, time and location of the exhibitions and webinars. It will also provide details of the local information point hosting consultation materials.</p>	<p>It was distributed to the local information point and community collection points to view and take away. It was also available at the in-person consultation events and was available to view and download from the Scheme website.</p> <p>The Consultation Information Booklet included the following sections:</p> <ul style="list-style-type: none">• introduction to the Scheme, and the consultation and planning process;• about Island Green Power;• the need for the Scheme;• Site evaluation and selection process;• a summary of early-stage and ongoing engagement activities;• a summary of key themes identified during early-stage workshops;• a summary of how the Applicant has used early-stage feedback to refine the design proposals and masterplanning process;• Island Green Power design principles• project-level design principles;• masterplanning strategies;• Indicative Masterplan;• the story of The Drovers;• Scheme description;• infographic detailing how a solar farm works;• information about the construction, operation and decommissioning phases of the Scheme;• an overview of the EIA process;• summaries of selected PEIR chapters (including landscape and visual, cultural heritage and archaeology, and ecology and biodiversity);• community benefit;• how to take part in the statutory consultation (including times, dates and locations of in-person events and online webinars);
--	---	--



		<ul style="list-style-type: none"> • how to access hard copies of the consultation materials; • statutory consultation document guide and glossary; • what happens after the statutory consultation; • an indicative project timeline from submission onwards; • details of how to contact the Community Relations Team; and • a QR code to direct readers to the Scheme website.
9 (Table 3)	<p>An online form will allow consultees to provide feedback on the Scheme. This will be accessible via the Scheme website.</p> <p>The form will be available in hard copy on request, at in-person consultation events and at the information point. Completed hard copies can be returned to the project team at consultation events or via Royal Mail – FREEPOST THE DROVES SOLAR FARM (no stamp or further details required).</p>	<p>An online Feedback Form was available on the Scheme website from the launch of statutory consultation on Wednesday 21 May 2025 until 23:59 on Wednesday 9 July 2025.</p> <p>Feedback Forms were available to take away from in-person consultation events, the information point and the community collection points throughout the statutory consultation period.</p> <p>Additional copies of the Feedback Form were distributed to stakeholders upon request.</p> <p>The project team received hard copies of the completed Feedback Forms via Freepost throughout the statutory consultation period.</p> <p>An additional discretionary period of 10 days following the close of the statutory consultation was honoured by the Applicant to allow for late submissions via post.</p>
9 (Table 3)	<p>The PEIR will describe the Scheme and contain a preliminary assessment of the potential significant environmental effects and an outline of measures to mitigate adverse effects.</p> <p>The PEIR will be based on information available at that time, but the assessments will be developed once further detail is available (such</p>	<p>The PEIR provided a detailed Scheme description, outlined preliminary EIA findings and identified the proposed mitigation measures to reduce, enhance and manage the effects the Scheme may have on the environment. The PEIR was available to view and download on the Scheme website from the launch of statutory consultation on Wednesday 21 May 2025.</p>



	<p>as further survey work) and reported within an ES submitted with the DCO application.</p> <p>An NTS (Non-Technical Summary) of the PEIR can also be downloaded free of charge from the website electronically at the local information point, and will be available in printed format to view at consultation events.</p>	<p>A reference copy of the PEIR was available at the in-person consultation events and at the information point.</p> <p>The findings of the PEIR were summarised in the NTS of the PEIR, which was available to view and download from the Scheme website from the launch of statutory consultation on Wednesday 21 May 2025.</p> <p>Hard copies of the NTS of the PEIR were available to view at the in-person events and at the information point and community collection points during the statutory consultation.</p> <p>The NTS of the PEIR was posted to stakeholders upon request by the Community Relations Team.</p>
9 (Table 3)	<p>Public exhibition events will contain exhibition boards to provide details of the Scheme.</p> <p>The exhibition boards will be available at consultation events and on the website.</p>	<p>Exhibition Banners were displayed at each in-person event, and were available to view and download from the Scheme website from the launch of statutory consultation on Wednesday 21 May 2025.</p> <p>The Exhibition Banners contained the following information:</p> <ul style="list-style-type: none"> • welcome to our statutory consultation event, with a QR code to access the digital Feedback Form; • about Scheme and Island Green Power; • our consultation to date, including how feedback received during the early-stage engagement has shaped the design of the Scheme; • project-level design principles; • masterplanning strategies; • Indicative Masterplan; • the story of The Drovers; • overview of the EIA process; • community benefit; • what happens next; and • how to have your say. <p>In addition to the Exhibition Banners displayed during the in-person events,</p>



		printed versions of the Indicative Masterplan were presented on tables for attendees to view.
9 (Table 3)	<p>This SoCC will be made available online throughout the consultation and free of charge in hard copy on request. A hard copy of the SoCC will also be available to inspect at the local information point once the Section 47 notice has been publicised.</p>	<p>The Section 47 notice was published in the Eastern Daily Press on Wednesday 23 April 2025 (see Appendix 9 for copies of the Section 47 notice).</p> <p>The SoCC was published on the Scheme website on Wednesday 23 April 2025. It was available to view and download throughout the seven-week statutory consultation period.</p> <p>The SoCC was sent via email to the stakeholders listed in Appendix 3 on Wednesday 23 April 2025.</p> <p>A reference copy of the SoCC was available at the information point and community collection points from Wednesday 23 April 2025.</p> <p>A reference copy of the SoCC was also available at the in-person consultation events.</p>
9 (Table 3)	<p>Stakeholders will be able to request hard copies of selected consultation materials to be sent to them free of charge. The consultation materials that will be available free of charge, upon request, are:</p> <ul style="list-style-type: none"> • SoCC; • Consultation Information Booklet; • Consultation Feedback Form; • Consultation Newsletter; and • NTS. <p>All requests should be made to the project team by email at info@drovessolarfarm.co.uk, by Freephone on 0800 0129 154 or at the consultation events.</p>	<p>The Applicant received seven requests for hard copies of selected consultation materials.</p> <p>Requests were made for printed copies of the Consultation Information Booklet, Feedback Form and NTS of the PEIR to be sent to stakeholders via post. The Applicant accepted all the requests and distributed the materials via post.</p> <p>The Applicant did not receive any requests for documents to be provided in alternative formats or to be translated. If the Applicant had received these requests, arrangements would have been made to facilitate these.</p>
10	A range of methods will be used to promote the consultation to a wider audience, as listed in Table 4. In addition, statutory notices will be	In accordance with Section 48 of the Act, notices were published:



	<p>published in accordance with Section 48 of the Act.</p> <p>These notices will be published once in a national newspaper and the London Gazette and twice (across two successive weeks) in local newspapers.</p>	<ul style="list-style-type: none"> • Once in a national newspaper (The Guardian) and the London Gazette on Wednesday 14 May 2025. • Twice in two successive weeks in the following locally circulating newspaper, on Wednesday 14 May 2025 and Wednesday 21 May 2025: <ul style="list-style-type: none"> ○ Eastern Daily Press.
10 (Table 4)	<p>A Consultation Newsletter, posted to all addresses in the PCZ, will provide an overview of the Scheme, the consultation and how people can get involved. The Consultation Newsletter will indicate where the other consultation documents can be accessed and publicise the consultation events, including locations, dates and timings.</p> <p>Copies of the Consultation Newsletter will also be emailed electronically to key stakeholders.</p> <p>The Consultation Newsletter will contain a QR code to direct people to the Scheme website.</p>	<p>A Consultation Newsletter was prepared and distributed by post on Tuesday 6 May 2025 to all addresses within the PCZ, ahead of the launch of the statutory consultation.</p> <p>The Consultation Newsletter was also sent electronically via email to all consultees listed in Appendix 3 on Friday 9 May 2025, accompanied by an invitation to participate in the statutory consultation.</p> <p>The Consultation Newsletter provided an overview of the Scheme, the consultation process and how to participate in the statutory consultation.</p> <p>The Consultation Newsletter included the locations, dates and times of the in-person events and webinars. It also detailed the locations of the information point and community collection points. A QR code was included to direct stakeholders to the Scheme website, where additional information could be found.</p>
10 (Table 4)	<p>Consultation Leaflets will be sent electronically to key stakeholders, such as community groups, asking them to publicise the consultation within their networks.</p> <p>Appendix 3 contains the list of stakeholders who will be asked to publicise the Consultation Leaflet, though this will be at their discretion.</p> <p>Printed copies of the Consultation Leaflet will be available at the local information point.</p> <p>Hard copies of the Consultation Leaflet will be distributed to residents</p>	<p>The Consultation Leaflet and Poster were included with the Consultation Newsletter in an email sent out to non-statutory consultees, including local elected representatives and local interest groups, on Wednesday 9 May 2025.</p>



	<p>and businesses within the PCZ approximately three weeks into the consultation period to boost engagement in the consultation.</p> <p>The Consultation Leaflet will contain a QR code to direct people to the Scheme website.</p>	
10 (Table 4)	<p>We will ask the local information point if they can display a hard copy of the Consultation Poster on their noticeboards, but this will be at their discretion.</p> <p>These Consultation Posters will contain a QR code to direct people to the Scheme website.</p>	<p>Swaffham Library received printed copies of the Consultation Leaflet and Poster for placement at their discretion.</p>
10 (Table 4)	<p>One press release publicising the upcoming consultation, and how the community and wider stakeholders can get involved, will be issued. The press release will be issued to national and regional newspapers seven days in advance of the launch of the statutory consultation.</p>	<p>A press release publicising the statutory consultation, and how the community and wider stakeholders could get involved, including by attending in-person and online events, was issued to national and regional newspapers on Wednesday 14 May 2025.</p> <p>The press release was issued to the following regional newspapers:</p> <ul style="list-style-type: none">• Eastern Daily Press;• Lynn News;• Dereham Times;• Norwich Evening News;• North Norfolk News; and• Watton and Swaffham Times. <p>The press release was issued to the following national newspaper:</p> <ul style="list-style-type: none">• the Guardian.
10 (Table 4)	<p>We will issue communications to key stakeholders, including local political representatives (councillors and MPs) and parish council clerks representing wards, constituencies and parishes within the PCZ to provide information about the Scheme and invite them to take part</p>	<p>Key stakeholders identified in the SoCC were emailed an invitation to participate in the statutory consultation on Thursday 15 May 2025. The list of stakeholders who received an invitation can be found in Appendix 3.</p> <p>The invitation included details about the dates, times and locations of the in-person consultation events and online webinars,</p>



	<p>in the consultation. These will be issued to:</p> <ul style="list-style-type: none"> • host constituency and neighbouring constituency area MPs; • elected representatives at Norfolk County Council; • elected representatives at the Borough Council of King's Lynn & West Norfolk; • elected representatives at Breckland Council; • host parish councils; • neighbouring local authorities; • neighbouring parish councils; and • local interest groups, such as community and environmental groups (see Appendix 3). <p>We will, in addition to the in-person and webinar events listed above, consider requests for additional briefing meetings with stakeholders.</p>	<p>how to provide feedback and how to contact the Community Relations Team.</p>
10 (Table 4)	<p>The project team will email local interest groups ahead of the statutory consultation, via the managed inbox. A full list of groups to be contacted can be found in Appendix 3.</p> <p>If we successfully contact representatives of these groups, we will request that a Consultation Poster be displayed on relevant noticeboards.</p> <p>We will also encourage these groups to promote the consultation through their preferred channels, such as Facebook, though this will remain at their discretion.</p>	<p>The Consultation Leaflet and Poster were included with the Consultation Newsletter in an email to local interest groups on Friday 9 May 2025. The email included a note to encourage stakeholders to print or share the Consultation Leaflet and Poster, at their discretion, among their community networks and noticeboards to help promote the statutory consultation and ensure it was accessible and inclusive.</p> <p>An additional email was sent on Thursday 15 May 2025 to invite stakeholders to participate in the statutory consultation.</p> <p>This invitation included details of the dates, times and locations of in-person consultation events and online webinars, how to provide feedback and how to contact the Community Relations</p>
10 (Table 4)	<p>The project team will contact the communications teams at Breckland Council, Norfolk County Council and</p>	<p>The Applicant contacted the communications teams at Norfolk County Council, Breckland Council and the</p>



	<p>the Borough Council of King's Lynn & West Norfolk to request that the consultation be promoted through their channels, such as Facebook.</p>	<p>Borough Council of King's Lynn and West Norfolk on Monday 24 March 2025 to request that the statutory consultation be promoted through their channels, such as Facebook.</p> <p>A follow-up email sharing a digital graphic and accompanying copy was sent to the communications teams at Norfolk County Council, Breckland Council and the Borough Council of King's Lynn and West Norfolk on Monday 28 April 2025.</p> <p>The Applicant did not receive any confirmations from the communications teams that the digital graphic had been published via online channels.</p>
11	<p>We want to ensure that our consultation is inclusive. We recognise that some people or groups may have difficulties taking part in the consultation process for a range of reasons.</p> <p>Consultation methods used to engage with these groups are set out in Table 5. We will continue to liaise with local organisations representing groups of people with these characteristics, where required, to ensure accessibility to the consultation and that our approach best meets the needs of their members and those they represent.</p>	<p>Local interest groups, including seldom-heard and representatives for vulnerable groups, were invited to participate in the statutory consultation via email on Thursday 15 May 2025.</p> <p>The invitation included details about the dates, times and locations of in-person consultation events and online webinars, how to provide feedback and how to contact the Community Relations Team.</p> <p>The in-person event venues had step-free access and accessible toilets. Members of the project team were on hand to support any vulnerable members of the public, including wheelchair users. Chairs were also available at each event.</p>
11 (Table 5)	<p>To help older people, we will provide:</p> <ul style="list-style-type: none"> • Freepost and a Freephone information line ; • important information in both digital and non-digital formats, and in alternative formats, such as braille and large print (upon request); • paper copies of materials at the local information point; and • face-to-face events at several locations, with members of the project team available to assist 	<p>A Freepost address and Freephone number were provided to ensure accessible and inclusive methods for stakeholders to participate in the statutory consultation.</p> <p>Consultation materials were available in both digital and non-digital formats.</p> <p>The Applicant did not receive any requests for documents to be provided in alternative formats or to be translated. If such requests had been received, the Applicant would have facilitated these.</p> <p>Hard copies of the consultation materials were available to reference and take away</p>



	with completing feedback responses.	<p>at the in-person consultation events, local information point and community collection points.</p> <p>Members of the project team were available to assist attendees during the events.</p>
11 (Table 5)	<p>To help people with visual impairments, we will provide:</p> <ul style="list-style-type: none"> • provide important information in both digital and non-digital formats, and in alternative formats, such as dementia-friendly, braille and large print (upon request); • the option to enlarge text on the website; • a Freephone information line; and • face-to-face events at several locations, with members of the team available to assist with completing feedback responses. 	<p>A Freepost address and Freephone number were provided to ensure accessible and inclusive methods for stakeholders to participate in the statutory consultation.</p> <p>Arrangements were in place to support any stakeholder who requested to submit feedback verbally via the Freephone line. The Applicant did not receive any requests for this during the statutory consultation period.</p> <p>Materials were provided in both digital and non-digital formats, with alternative formats such as braille, large print and dementia-friendly versions available upon request.</p> <p>While no requests were received for alternative formats, these arrangements were in place throughout the statutory consultation.</p> <p>The Scheme website included an option to enlarge text and print or download materials.</p> <p>In-person consultation events were held at several locations, where members of the team were available to assist attendees and support participation where required.</p>
11 (Table 5)	<p>To help people with limited mobility, we will:</p> <ul style="list-style-type: none"> • directly mail the Consultation Newsletter and leaflet to all stakeholders within the PCZ and provide details of how to both access paper copies of other consultation documents and provide feedback online and by post ; • host online engagement webinars to negate the need to travel to public events; and 	<p>The Consultation Newsletter and Leaflet were posted directly to stakeholders in the PCZ.</p> <p>Two online webinars were offered as an alternative to the in-person consultation events, to negate the need for travel.</p> <p>The in-person consultation event venues were selected based on their accessibility. The Applicant identified venues that met key accessibility criteria, including step-free access, designated parking and proximity to public transport routes.</p>



	<ul style="list-style-type: none"> provide a Freephone information line and Freepost address. 	<p>A Freepost address and Freephone number were provided to ensure accessible and inclusive methods for stakeholders to participate in the statutory consultation.</p>
11 (Table 5)	<p>To help people with hearing impairments, we will:</p> <ul style="list-style-type: none"> directly mail the Consultation Newsletter to all stakeholders within the PCZ and provide details of how to access paper copies of other project documents and how to provide feedback by post; provide important information in both digital and non-digital formats; and make automated subtitles available at webinars to ensure each session is accessible. 	<p>The Consultation Newsletter and Consultation Leaflet were posted directly to stakeholders in the PCZ.</p> <p>The Scheme website offered a digital platform for engagement and participation in the statutory consultation. The “Documents” page of the website hosted all the consultation materials, which were available to view and download.</p> <p>Materials were provided in both digital and non-digital formats, with alternative formats, such as braille, large print and dementia-friendly versions, available upon request.</p> <p>The Livestorm platform enabled automated subtitles during the two webinar events.</p>
11 (Table 5)	<p>To help geographically isolated individuals or communities, we will:</p> <ul style="list-style-type: none"> Direct mail the Consultation Newsletter and leaflet to all stakeholders within the PCZ and provide details of how to access paper copies of other project documents and provide feedback by post; and advertise the availability of telephone callbacks for stakeholders who would like to discuss the Scheme further with the project team. 	<p>The Consultation Newsletter and Consultation Leaflet were posted directly to stakeholders in the PCZ.</p> <p>The Consultation Newsletter provided details on how to access printed copies of the consultation materials, including at the local information point, community collection points and upon request.</p> <p>Details of how to contact the project team via email, Freephone information line or Freepost were included in the Consultation Newsletter and Consultation Leaflet.</p> <p>Stakeholders were also informed of the availability of telephone callbacks with the Community Relations Team.</p>
12 (Table 6)	<p>The following enquiry channels will be available throughout the statutory consultation for members of the community and other stakeholders to contact the project team, ask questions and request further information or printed copies of consultation materials and</p>	<p>The project team provided substantive responses within 10 working days. In exceptional circumstances where this was not possible, stakeholders were notified and a holding response was sent.</p> <p>Responses to postal enquiries were issued within 10 working days, and requests for</p>



	<p>documents. These channels are set out in Table 6 and will continue to be active throughout the pre-application period.</p> <ul style="list-style-type: none"> • Telephone: Freephone 0800 0129 882, from 9:00–17:30 on weekdays (with an answerphone facility to take messages outside these hours) • Email: info@drovessolarfarm.co.uk • People can email 24 hours a day, with emails being monitored between 9:00 and 17:30 on weekdays. We will aim to acknowledge all emails received as soon as practicable and will endeavour to provide a substantive response within 10 working days of receipt. • Post: FREEPOST THE DROVES SOLAR FARM <p>Should enquiries received via post require a response, this will be issued within 10 working days of receipt. Urgent enquiries should be directed to the Scheme's email address or Freephone line.</p>	<p>printed copies of consultation materials and documents were fulfilled.</p>
13	<p>During the statutory consultation period, respondents will be able to submit their feedback relating to the Scheme. All responses must be received by 23:59 on the closing date. Responses received after that date may not be considered. We will allow an additional two-week period to receive responses via post.</p>	<p>Responses to the statutory consultation were received between Wednesday 21 May 2025 and 23:59 on Wednesday 9 July 2025.</p> <p>Discretionary extensions were granted on a case-by-case basis to consultees contacted under Section 42 who expressed concerns about meeting the deadline of 23:59 on Wednesday 9 July 2025.</p> <p>An additional 10-day period was allowed for postal feedback.</p>
13.1	<p>How to respond to the consultation</p> <p>Consultation responses can be made in the following ways:</p>	<p>Feedback channels remained open and were monitored throughout the consultation period.</p> <p>All feedback received through these channels was provided to the design and</p>



	<ul style="list-style-type: none">• completing the Feedback Form online, which can be accessed via the Scheme website: www.drovessolarfarm.co.uk;• completing a printed Feedback Form, which can be collected from a consultation event or the local information point, or on request by contacting the project team – completed forms can be handed to the project team at events, scanned and emailed back to info@drovessolarfarm.co.uk, or sent to FREEPOST THE DROVES SOLAR FARM (no stamp or further details required);• emailing comments to info@drovessolarfarm.co.uk; and• writing to us at FREEPOST THE DROVES SOLAR FARM (no stamp or further details required). The exact Freepost address is yet to be confirmed.	<p>environmental assessment team to be taken into consideration.</p> <p>Further evidence of this process, including how comments have been considered, will be detailed in the forthcoming Consultation Report.</p>
13.1	<p>The project team can also be contacted by Freephone on 0800 0129 154. They can assist with any questions about the Scheme or the consultation. In exceptional circumstances, we will take feedback over the phone; however, this will need to be arranged in advance.</p>	<p>While no requests were made for feedback to be given over the phone, these arrangements were in place throughout the consultation.</p>



THE DROVES
SOLAR FARM